

REPORT TO THE MEMBERS

This past year was marked with unprecedented uncertainty. Despite challenges, we Minnesotans continued to forge a path toward a brighter future. We are proud to say that YOUR statewide association was with you every step of the way. We know that if there were two things Minnesotans could count on as constants during this trying time, one was an indomitable spirit to work together to survive – and the other was the reliability of your electric power.

MREA endeavored to not only survive but also grow stronger. The first key to our collective growth was adaptability. Our dedicated team was able to quickly respond to the ever-changing needs of our cooperatives and members through improvements such as enhancing our social media platform. We also developed a grassroots advocacy technology platform that enabled cooperative users across the state to more easily contact their elected officials, and empowered our members with additional written communication tools they could use to better engage in energy policy venues.

The second key to our success this past year was an unrelenting dedication to safety. There is no substitute for the peace of mind that comes with knowing that our homes, workplaces and families are safe and secure – and we are proud that we

did everything in our power to provide our essential services with as little risk to our members as possible. We Minnesotans do not cave under pressure. It is not in our DNA. MREA refused to become bogged down by the daunting challenges of the present because we maintained our focus on the bright future that lay ahead of us. In many ways, 2020 was a year of opportunity – we moved forward on the 'strengthening MREA plan' in numerous ways, including developing new member advisory committees to provide input for government affairs and to grow our role in strategic communications.

In conclusion, we want to stress to you how proud we are of the great strides MREA has made during this challenging year, of the way Minnesotans have come together and of the service we are thankful to be able to provide. Thank you for allowing us to serve you in our mission to amplify the collective voice of Minnesota's electric cooperatives.

Adapting together,



Wes & Darrick



Darrick Moe

(left) MREA President and CEO

Wes Waller

(right) MREA Board Chair and North Itasca Board Director

CONTENTS

4 | Government Affairs

5 | Vendor Membership

6 | Education and Training

8 | Communications

10 | Safety

12 | Financial Reports

15 | MREA Board of Directors
and Staff

17 | ACRE Honor Roll

18 | REPAC Honor Roll

19 | In Memoriam

CONTACT



www.mrea.org



11640 73rd Ave. N.
Maple Grove, MN 55369



facebook.com/MNRuralElectric



info@mrea.org



763-424-1020



twitter.com/MNRuralElectric



linkedin.com/company/minnesota-rural-electric-association

GOVERNMENT AFFAIRS

The year 2020 was a challenging year to impact legislation, but MREA continued to strengthen our government affairs efforts and adapt to the changing environment. We expanded our bandwidth by bringing on a seasoned regulatory affairs consultant. We successfully launched Voter Voice, our new grassroots advocacy platform, which allows our grassroots network to seamlessly contact their legislators regarding our priority issues. We worked to increase our social media posts on our legislative priorities. Finally, we held dozens of virtual meetings with lawmakers after committee hearings and legislative meetings moved from in-person to a virtual format last March.

Ultimately, while the 2020 legislature opted to move forward with consensus bills only, our grassroots efforts to address our legislative priorities moved the ball forward. We are now well positioned to for a successful 2021 legislative session. We will continue to advocate for our three legislative priorities of CIP reform (the ECO Act), addressing the load control receiver permitting issue, and clarifying that utility easements may be used for broadband fiber. MREA will also continue to protect our members' interests in navigating the broad range of energy legislation being considered. We thank our grassroots network for their continued support. (See page 17 for the REPAC honor roll).

2020 Highlights



Expanded our bandwidth by bringing on more regulatory affairs support



Deployed Voter Voice to enhance our grassroots engagement



Moved ECO forward to reform CIP



Lowered inspection fees and eliminated inspections for door change-outs for load control receivers



Represented cooperatives' interests in navigating the clean energy transition to ensure electricity remains reliable and affordable as it gets cleaner

Zooming Minnesota's rural electric priorities



Minnesota Gov. Tim Walz, who met with Minnesota's 50 electric cooperative to discuss our legislative and regulatory priorities.



U.S. Sen. Amy Klobuchar updates representatives from Minnesota's rural electric cooperatives on continue efforts to #repriceRUSrates.



Sen. Rarick (R) led our efforts within the state on the ECO and Load Control Receiver efforts in the Senate.

VENDOR MEMBERSHIP

MREA is grateful for our vendors' continued partnership throughout the pandemic. Thanks to generous support, our annual Burn Center Golf Tournament continued. We thank our vendors for the sponsorships of education offerings. Despite few opportunities due to COVID-19, we were astounded by the continued support of our vendor members.

PLATINUM VENDOR MEMBERSHIP

Rural Electric Supply Cooperative (RESCO)

GOLD VENDOR MEMBERSHIP

Border States Electric Supply
Dakota Supply Group
FS3, Inc.
Generac Power Systems
Highline Construction
Juniper Networks
Karian Peterson Power Line Construction
Northern Clearing, Inc.
Sensus
STAR Energy Services, LLC
Wesco Distribution Inc

SILVER VENDOR MEMBERSHIP

ALTEC Industries
Anderson Underground
Brady, Martz & Associates, P.C.
Calix
ElectroTech Inc
ENGIE North America Inc.
Global Transformer Solutions
Irby Utilities
Legacy Power Line, Inc.
Skyline Utilities
TelCom Construction, Inc.

TRADE VENDOR MEMBERSHIP

ABM Equipment & Supply, LLC
Amaril Uniform Company
American Power & Communications Group
B & B Commercial Coating, LLC
Bauman Associates, Ltd.
Burns & McDonnell
Century Fence Company
Channell
Cooperative Response Center, Inc.
Creative Culture Media
Dairyland Power Cooperative
DGR Engineering

Ditch Witch of Minnesota, Inc
Enel X
EUSCO
Evans Lipka & Associates
EZ Spot UR, Inc.
Foxtail Utilities
Hartigan Power Equipment
HRExpertiseBP LLC
Hubbell Power Systems
Kingsway Marketing
LHB, Inc.
Locators and Supplies Inc
Market & Johnson, Inc.
McFarland Cascade
MEI - Moorhead Electric
MP Nexlevel
Milwaukee Tool
Mi-Tech Services, Inc.
New Age Tree Service
NFP
Osmose Utilities Services, Inc.
Power Product Services
Primus Marketing Group Inc.
Professional Computer Solutions LLC
Push, Inc.
RDO Vermeer Sales & Service
SkySkopes
Solomon Corp
T&R Electric
Upper Midwest Utility Sales
Utility Sales Associates
VF Workwear
Wilson Company Marketing & Promotion, Inc.
Zoll Medical

AFFILIATED LEVEL

CoBank
Federated Rural Electric Insurance Exchange
National Rural Utilities Cooperative Finance Corporation

EDUCATION AND TRAINING

MREA's commitment to continuing education remained paramount despite the pandemic. COVID-19 adversely affected our education program, but MREA staff persevered by offering many opportunities online, piloting a hybrid meeting format and offering our first-ever livestream opportunity. We successfully, and safely, conducted an in-person combined annual meeting and Energy Issues Summit with more than 140 people in attendance. We also introduced our first-ever livestream option, with nearly 70 participants. Overall, MREA had 1,297 education registrations. In tandem, we planned a robust program for 2021 with more than 30 online opportunities, a new suite of CPE-certified financial training and additional leadership training opportunities targeted toward leaders in the field and more experienced leaders.

2020 Events

- Lineworker Training Conference
- Four webinars, offered through Anoka-Technical College
- Three learning opportunities for CEOs provided in lieu of the April CEO Conference
- Work Order Procedures – four sessions
- NRECA Board Leadership Certificate (BLC) – three courses
- NRECA Credentialed Cooperative Director (CCD) – five courses (full series)
- Leadership Training – 9 sessions
- NRECA Retirement Planning
- Collections & Disconnects
- Communicators Network
- IT Users Group
- Engineers & Operations Conference
- Finance Managers Summer Conference (hybrid, in-person and virtual participation)
- Fall CEO Conference (hybrid, in-person and virtual participation)
- Designated Employer Representative and Reasonable Suspicion Training (virtual participation)

2020 LEADERSHIP TRAINING GRADUATES

Maria Anderson, East River Electric Power Cooperative
Michelle Anderson, Beltrami Electric Cooperative, Inc.
Nathan Bart, Crow Wing Power
Lisa Bunes, Lake Country Power
Chad Briese, Minnesota Valley Electric Cooperative
Chad Croonquist, Runestone Electric Association
Eric Dessner, People's Energy Cooperative
Kyler Erdman, Crow Wing Power
Alex Green, BENCO Electric
Bill Haman, Beltrami Electric Cooperative, Inc.
Jason Haman, Lake Region Electric Cooperative
Kasey Kampfer, Beltrami Electric Cooperative, Inc.
Derick Kubitz, Beltrami Electric Cooperative, Inc.
Steve Lapos, Beltrami Electric Cooperative, Inc.
Anne Larson, Lake Country Power
Allen Lendt, Meeker Cooperative Light & Power Association
Angela Lyseng, Beltrami Electric Cooperative, Inc.
Jeff May, East River Electric Power Cooperative
Ethan Orlando, Crow Wing Power
Taylor Schmidt, Beltrami Electric Cooperative, Inc.
Clay Tanner, East River Electric Power Cooperative
Julie Thiry, East Central Energy
Fayet Turitto, East Central Energy
Cammie Vogel, Beltrami Electric Cooperative, Inc.
Kim Wilson, Steele-Waseca Cooperative Electric
Rebecca Zaiser, Beltrami Electric Cooperative, Inc.

NRECA's Director Certificates Earned

NRECA's Director Certificate Programs assist directors at all stages of service, helping them to understand their roles and responsibilities. These programs help directors stay up-to-date on key issues and trends in the industry while preparing them to meet challenges.

CREDENTIALLED COOPERATIVE DIRECTOR (CCD)

Bob Nesheim, Arrowhead Electric Cooperative, Inc
Robert Wallner, Beltrami Electric Cooperative, Inc.
Marilyn Lynch, BENCO Electric Cooperative
Donald Westphal, BENCO Electric Cooperative
William Middlecamp, Dakota Electric Association
Gregory Kvasnicka, East Central Energy
Joseph Pacovsky, Freeborn Mower Co-op Services
Mike Brasel, Lake Region Electric Cooperative
Patrick Meyers, Lake Region Electric Cooperative
Al Wieser, MiEnergy Cooperative
Gary Clarke, Nobles Cooperative Electric
Todd Christensen, North Itasca Electric Co-op
Stacy Blawat, Red Lake Electric Cooperative, Inc.
Gary Eekhoff, Renville-Sibley Cooperative Power Association
Matthew Haubrich, Renville-Sibley Cooperative Power Association
Kyle Rieke, Renville-Sibley Cooperative Power Association
Helen Ruebel, Runestone Electric Association
Matthew Mattson, Runestone Electric Association
Anthony Ampe, Runestone Electric Association
Eric Peterson, Stearns Electric Association

BOARD LEADERSHIP CERTIFICATE (BLC)

Bennett Zierke, Agralite Electric Cooperative
Suzanne Kringen, Beltrami Electric Cooperative, Inc.
Bruce Brockmann, Federated REA
Glen Dicks, Federated REA
Darvin Dean, Federated REA
James Rokeh, Lyon-Lincoln Electric Cooperative, Inc.

Cindy Hokeness, Nobles Cooperative Electric
Mark Hatton, P.K.M Electric Cooperative, Inc.
Jerry Fries, Stearns Electric Association

DIRECTOR GOLD CREDENTIAL (DGC)

Suzanne Kringen, Beltrami Electric Cooperative, Inc.
John Lund, Beltrami Electric Cooperative, Inc.
Gary Stenzel, BENCO Electric Cooperative
John DeYoe, Dakota Electric Association
Linda Laitala, East Central Energy
David Meschke, Federated REA
Tim Kivi, Itasca-Mantrap Co-op Electrical Association
Merv Anderson, Lyon-Lincoln Electric Cooperative, Inc.
Charles Frana, MiEnergy Cooperative
Jennifer Scharmer, MiEnergy Cooperative
Joseph Book, People's Energy Cooperative
Kenneth Wohlers, People's Energy Cooperative
Jermone Wooner, People's Energy Cooperative
Gary Wilson, Steele-Waseca Cooperative Electric

COMMUNICATIONS

Communicating with our members became more important than ever in 2020. Despite ever-changing and uncertain situations, our commitment to providing our electric cooperatives and the public vital, up-to-date information ensured that essential information was disseminated quickly and accurately.

Our primary communication tool, mrea.org, saw an increase, with up to 4,000 monthly visitors. Our Member Center on the website allowed our online community to register for training and to search our libraries of information. In addition, we continued to partner with ARC media to enhance our social media platforms. Our top audience cities are consistently Minneapolis and St. Paul, with men between the ages of 35-44 as the leading force among our fans.



Minnesota Rural Electric Association
Thu 3/26/2020 5:05 pm ...

Governor Tim Walz has directed Minnesotans to stay at home and limit their

Total Engagements	1,177
Reactions	225
Comments	5
Shares	34
Post Link Clicks	1
Other Post Clicks	912

Minnesota Rural Electric Association
Mon 6/1/2020 9:17 am P...

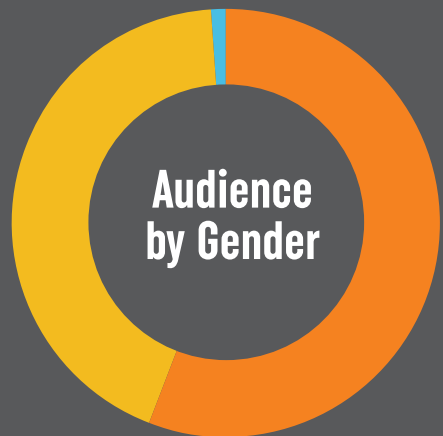
The **#ECOact** will create jobs, save rural Minnesota money, and reduce carbon. Is your

Total Engagements	1,049
Reactions	539
Comments	19
Shares	53
Post Link Clicks	26
Other Post Clicks	412

Minnesota Rural Electric Association
Tue 6/9/2020 9:34 am PDT

The **#ECOact** will create jobs, save rural Minnesota money, and reduce carbon! Will your

Total Engagements	915
Reactions	432
Comments	28
Shares	31
Post Link Clicks	20
Other Post Clicks	404



56% Men
43% Women
1% Nonbinary/unspecified

OUR COOPERATIVE MEMBERS



Employ approximately
2,974 people



16,683
MWH per year supplied



135,258
Miles of electric
distribution lines

(by far the largest distribution
network in the state)



855,002
Total members
served

Median sized
co-op has
8,267
customers

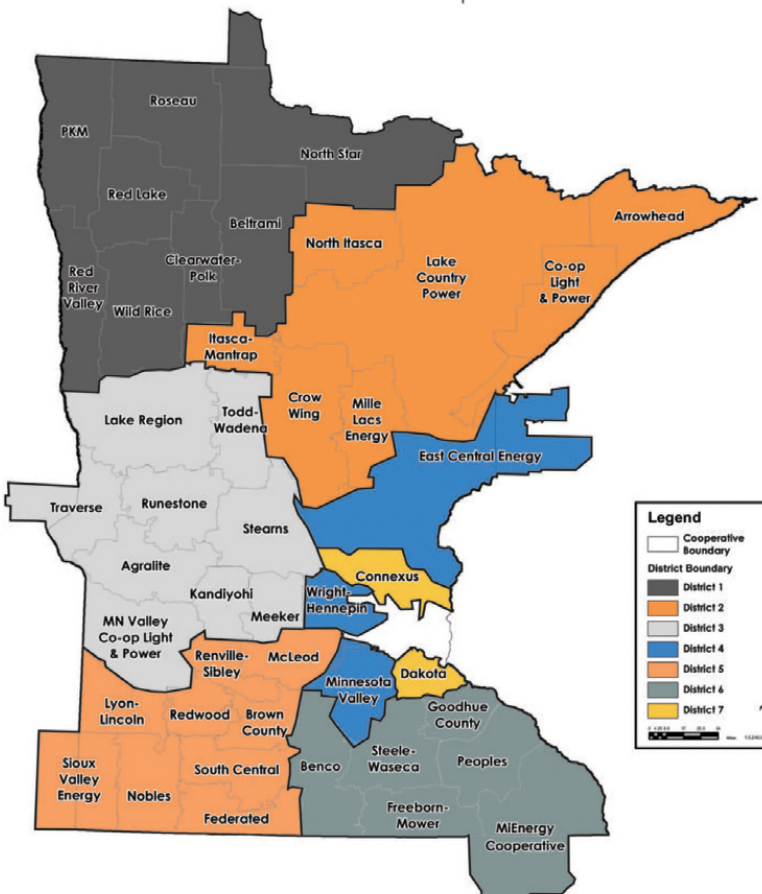


Co-ops range in size between
1,883 to **133,567** customers



Average **6.6** consumers per mile of distribution line

MREA district map of Minnesota's electric cooperatives



Mark Your Calendar

ANNUAL MEETING

Saint Paul RiverCentre
St. Paul, MN

2022 March 13-16

2023 February 19-22

2024 March 17-20

ENERGY ISSUES SUMMIT

RadissonBlu at Mall of America
Bloomington, MN

2021 August 9-12

2022 August 1-4

2023 July 31-August 3

2024 August 12-15

See our full 2021 calendar of events at mrea.org

SAFETY

Safety is at the forefront of everything we do and had an even heightened emphasis in 2020. As part of our “adapt to overcome” mentality, safety staff went out into the field – in smaller groups following COVID-19 precautions – to meet with Minnesota’s cooperatives. We provided professional services and resources to drive actions and solutions that support a culture of safety. Co-ops had six options to safely continue receiving safety services and the end result provided more resilient offerings going forward.



Terry Ehli displays “Mr. Tee”



MREA
Safety Staff



Years of Utility
Experience



Years of Safety
Experience

Safety Highlights

- ✓ Released the RESAP Assessment Tool to participating cooperatives
- ✓ Presented over 16 NEW I-Safety lessons to cooperatives during COVID-19
- ✓ Developed and delivered over eight NEW Safe-T-Gate lessons for field visits
- ✓ Promoted active discussions of incidents with over 60 stories/photos submitted for The Safety Playbook
- ✓ Prepared three formal accident presentations for future discussions at the co-ops
- ✓ Released the laptop with Overhead Transformer Connection software for co-op use
- ✓ Presented at the Virtual MN/SD Safety & Health Conference; Instructed Electrical Safety for First Responders to co-ops and the public
- ✓ Revised and updated the Storm Response Directory
- ✓ Promoted “Commitment to Zero” actions. Presented Speak Up, Listen Up given as one way to demonstrate a commitment to zero.
- ✓ Purchased 8 CPR manikins that provide constructive feedback and designed a COVID-friendly pole top dummy (called Mr. Tee) to safely meet the compliance action and ensure this life-saving skill can be practiced.

Influencing a RESAP Standard of Safety

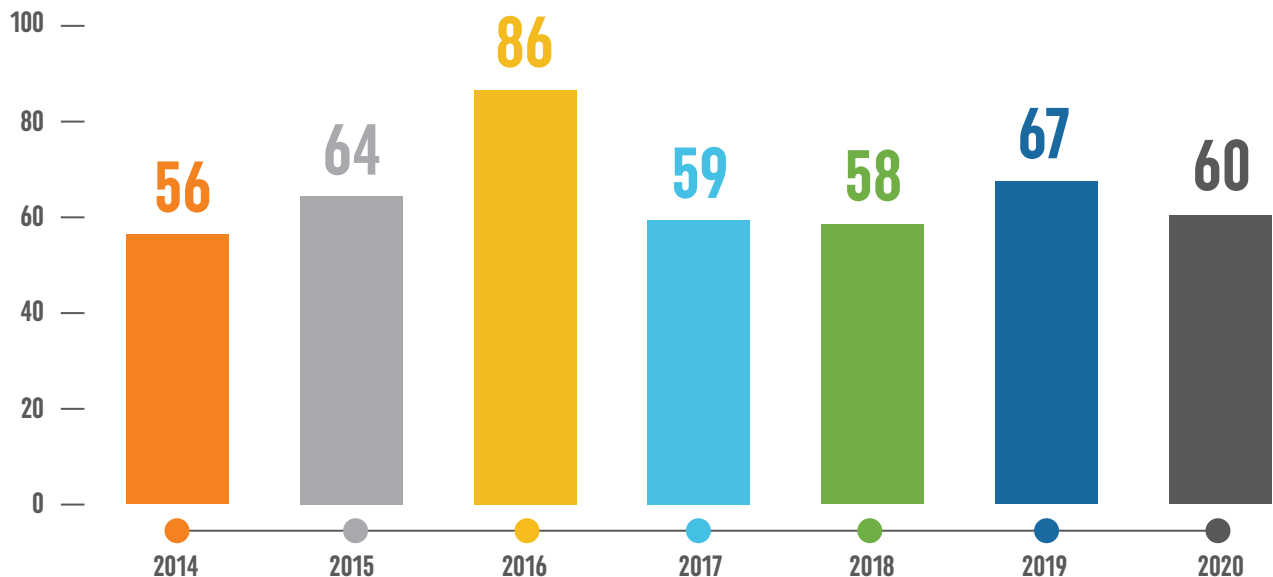
In Minnesota, 34 cooperatives participate in the Rural Electric Safety Achievement Program (RESAP). These cooperatives completed their 3-year actions in 2020.

- Beltrami Electric Cooperative, Inc.
- Brown County Rural Electrical Association
- Clearwater-Polk Electric Cooperative, Inc.
- McLeod Cooperative Power Association
- North Star Electric Cooperative, Inc.
- Redwood Electric Cooperative
- South Central Electric Association
- Traverse Electric Cooperative, Inc.
- Wild Rice Electric Cooperative, Inc.

APPRENTICE COMPLETIONS

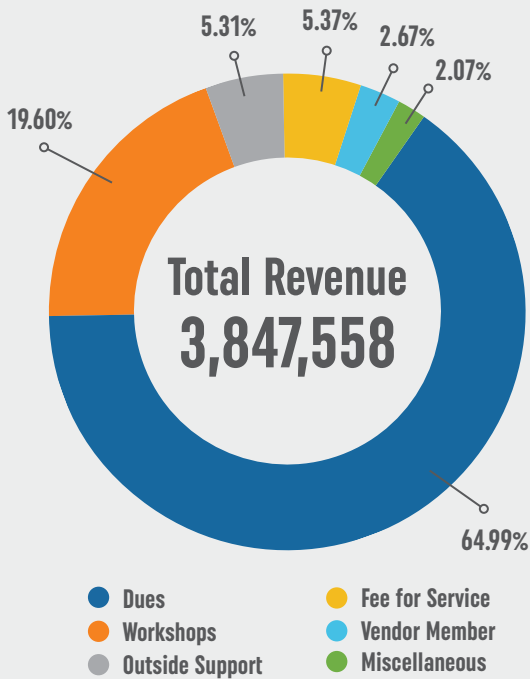
Alex Ames, Beltrami Electric Cooperative, Inc.
Devin Andersen, Red River Valley Cooperative Power Association
Matt Bjorgo, PKM Electric Cooperative, Inc.
Cole Brix, East Central Energy
Aaron Buysse, Nobles Cooperative Electric
Troy Cowart, East Central Energy
Marc Dahlquist, East Central Energy
Darren DeBaere, Lake States Construction, Inc.
Jacob Engebretson, Crow Wing Power
Michael Grewe, Karian Peterson Power Line Construction
Derek Groebner, Connexus Energy
Blaine Hougen, BENCO Electric
Chad Johnson, Roseau Electric Cooperative, Inc.
Brett Klopp, PKM Electric Cooperative, Inc.
Jeremy Pierson, Redwood Electric Cooperative
Casey Schoellerman, Nobles Cooperative Electric
Neal Vatnsdal, Roseau Electric Cooperative, Inc.

Over 450 stories have been shared through our Safety Pays Program in the **Safety Playbook**, **Download on Safety** and the **Safety Pallet** since 2014 for a better, safer world.

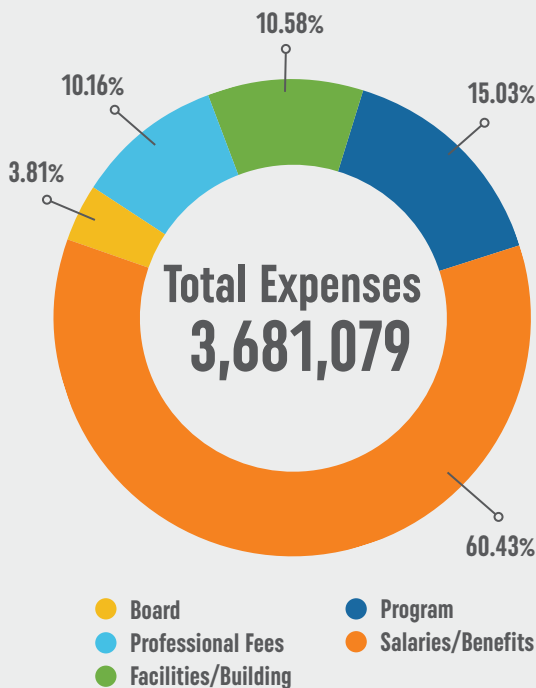


2020 FINANCIAL REPORTS

2020 REVENUE SOURCES



WHERE DID THE 2020 RESOURCES GET SPENT?



Minnesota Rural Electric Association STATEMENT OF FINANCIAL POSITION

December 31, 2020

ASSETS

Current assets:

Cash and cash equivalents	227,029
Investments - short term	1,550,000
Prepaid expense	53,798
Prepaid pension expense - current portion	104,607
Accounts receivable	<u>47,096</u>

Total current assets 1,982,530

Investments - long-term 194,793

Property and equipment:

Land	101,845
Building and building improvements	629,214
Office furniture and equipment	318,927
Automobiles - safety and loss control	171,913
Automobiles - administration	<u>40,235</u>
	1,262,134
Less: accumulated depreciation	<u>(842,946)</u>

Net property and equipment 419,188

Other Assets:

Prepaid pension expense net of current portion 110,321

TOTAL ASSETS 2,706,832

Minnesota Rural Electric Association
STATEMENT OF FINANCIAL POSITION

December 31, 2020

LIABILITIES AND MEMBERS' EQUITY

Current liabilities:	
Accounts Payable	19,216
Accrued Expenses:	
Vacation and paid time off	69,894
Salaries and other expenses	52,013
Deferred revenue	109,699
Other current liabilities	34,692
Current portion of note payable	<u>56,545</u>
Total current liabilities	<u>342,059</u>
Long-term liabilities:	
Note payable net of current portion	150,555
Deferred compensation	<u>95,000</u>
Total long-term liabilities	<u>245,555</u>
Members' equity - without donor restrictions	
Membership certificates - \$5 face value - 53 issued	265
Board designated funds for:	
Investment in land and building	466,063
Undesignated	1,652,890
TOTAL NET ASSETS	<u>2,119,218</u>
TOTAL LIABILITIES AND NET ASSETS	<u>2,706,832</u>

2020 FINANCIAL REPORTS

Minnesota Rural Electric Association

STATEMENT OF ACTIVITIES

December 31, 2020

	2020		Total
	Without Donor Restriction	With Donor Restriction	
Support and Revenue			
Membership dues	\$ 2,411,239	\$ -	\$ 2,411,239
Safety, loss control and miscellaneous	617,569	-	617,569
Education program fees	213,773	-	213,773
Annual meeting	-	-	-
Energy issues summit	91,311	-	91,311
Safety and loss control insurance contribution	115,149	-	115,149
Youth program	2,982	-	2,982
Vendor member dues	102,545	-	102,545
Government affairs support	43,500	-	43,500
Rural Electric Managers Association	117,478	-	117,478
NRUCFC	25,600	-	25,600
District meetings	10,150	-	10,150
Interest	37,015	-	37,015
Unrealized gain (loss) on investments	13,731	-	13,731
CoBank contribution	20,000	-	20,000
Other	25,516	-	25,516
Total revenues, gains and other support	3,847,558	-	3,847,558
Expenses:			
Programs			
Education	677,854	-	677,854
Safety and loss control	868,668	-	868,668
Legislative	723,252	-	723,252
Supporting activities			
Administrative and other	1,411,305	-	1,411,305
Total expenses	3,681,079	-	3,681,079
Change in members' equity	\$166,479	-	\$166,479

The audited financial statements will be available in MREA's member community at www.mrea.org following the 2021 annual meeting.

MREA BOARD OF DIRECTORS



Wes Waller
Chair
MREA District 2
North Itasca
Electric Co-op, Inc.



Rick Coe
First Vice Chair
MREA District 1
Beltrami Electric
Co-op, Inc.



Ken Fioreck
Second Vice Chair
MREA District 7
Connexus Energy



Ron Stevens
Secretary
MREA District 6
MiEnergy
Cooperative



Warren Rau
Treasurer
MREA District 3
Agralite Electric
Cooperative



Jim Connelly
MREA District 4
Minnesota Valley
Electric Cooperative



Sandy Ludeman
MREA District 5
Lyon-Lincoln
Electric
Cooperative, Inc.



Stacy Miller
MREA District 7
Dakota Electric
Association



Jeff Nornes
MREA District 1
Wild Rice Electric
Cooperative, Inc.



Ron Schwartau
MREA District 5
Nobles
Cooperative
Electric



Jerry Tvedt
MREA District 4
East Central
Energy



Tim Velde
MREA District 3
Minnesota Valley
Cooperative
Light & Power



John Wells
MREA District 6
BENCO Electric
Cooperative



Barb Welty
MREA District 2
Mille Lacs Energy
Cooperative

MREA STAFF



Krista Benjamin
Director, Education
& Communication



Darrick Moe
President & CEO



Terry Ehli
Safety Specialist



**Curt
Freudenberg**
Safety Specialist



Jenny Glumack
Manager of
Legislative Affairs



Carol Hendricks
Executive &
Membership
Coordinator



**Lidia Dilley
Jacobson**
Director, Safety &
Loss Control



Gayle Karol
Digital Media
& Marketing
Coordinator



Karen Miller
Event &
Membership
Coordinator



Joyce Peppin
Director,
Government
Affairs & General
Counsel



Andrew Sjolie
Safety Specialist



**Melissa
Stachovich**
Director, Finance
& Administration



Jason Stewart
Event & Education
Program Specialist

ACRE HONOR ROLL

100% BOARD AND MANAGEMENT

Agralite Electric Cooperative

Beltrami Electric Cooperative, Inc.

BENCO Electric Cooperative
100% PRESIDENT'S CLUB

Brown County Rural Electrical Association
100% CENTURY CLUB

Dakota Electric Association
100% CENTURY CLUB

East Central Energy

Freeborn-Mower Cooperative Services
1% OR MORE CO-OP OWNER PARTICIPATION

Lake Country Power

Lyon-Lincoln Electric Cooperative, Inc.

Meeker Cooperative Light & Power Association

MiEnergy Cooperative

Mille Lacs Energy Cooperative

Minnesota Valley Cooperative Light & Power Association

Minnesota Valley Electric Cooperative

Nobles Cooperative Electric
100% BOARD VICE PRESIDENT'S CLUB

North Star Electric Cooperative

People's Energy Cooperative

PKM Electric Cooperative
100% CENTURY CLUB

Roseau Electric Cooperative

Sioux Valley Energy
100% MANAGEMENT CENTURY CLUB

Stearns Electric Association
100% CENTURY CLUB

Todd-Wadena Electric Cooperative
100% CENTURY CLUB

Wild Rice Electric Cooperative, Inc.

Wright-Hennepin Cooperative Electric Association

100% BOARD

Connexus Energy
100% CENTURY CLUB

Crow Wing Power

Federated Rural Electric Association
100% CENTURY CLUB; 100% SPOUSE PARTICIPATION

Goodhue County Cooperative Electric Association

Itasca-Mantrap Cooperative Electrical Association

Kandiyohi Power Cooperative

McLeod Cooperative Power Association
100% CENTURY CLUB

Red Lake Electric Cooperative, Inc.

Renville-Sibley Cooperative Power Association
100% CENTURY CLUB

South Central Electric Association

Steele-Waseca Cooperative Electric
*100% CENTURY CLUB; 100% SPOUSE PARTICIPATION;
1% OR MORE CO-OP OWNER PARTICIPATION*

Traverse Electric Cooperative, Inc.
100% MANAGEMENT

Clearwater-Polk Electric Cooperative, Inc.

Lake Region Electric Cooperative

Redwood Electric Cooperative



REPAC HONOR ROLL

100% BOARD AND MANAGEMENT

Agralite Electric Cooperative
Beltrami Electric Cooperative, Inc.
BENCO Electric Cooperative
Brown County Rural Electrical Association
Connexus Energy
Dakota Electric Association
East Central Energy
Lake Country Power
Lake Region Electric Cooperative
Lyon-Lincoln Electric Cooperative, Inc.
McLeod Cooperative Power Association
Meeker Cooperative Light & Power Association
MiEnergy Cooperative
Mille Lacs Energy Cooperative
Minnesota Valley Cooperative Light & Power Association
Minnesota Valley Electric Cooperative
Nobles Cooperative Electric
North Itasca Electric Co-op, Inc.
North Star Electric Cooperative, Inc.

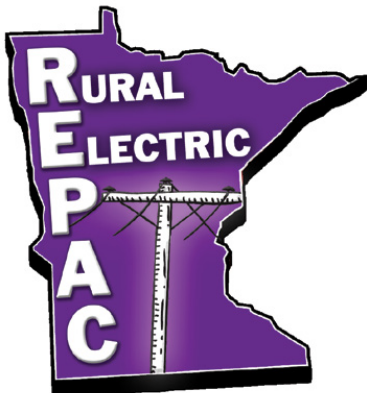
People's Energy Cooperative
PKM Electric Cooperative, Inc.
Redwood Electric Cooperative
Roseau Electric Cooperative, Inc.
Runestone Electric Association
South Central Electric Association
Stearns Electric Association
Steele-Waseca Cooperative Electric
Todd-Wadena Electric Cooperative
Wild Rice Electric Cooperative, Inc.
Wright-Hennepin Cooperative Electric Association

100% BOARD

Crow Wing Power
Federated Rural Electric Association
Freeborn-Mower Cooperative Services
Goodhue County Cooperative Electric Association
Itasca-Mantrap Cooperative Electrical Association
Kandiyohi Power Cooperative
Red Lake Electric Cooperative
Red River Valley Cooperative Power Association
Renville-Sibley Cooperative Power Association
Sioux Valley Energy

100% MANAGEMENT

Clearwater-Polk Electric Cooperative, Inc.



IN MEMORIAM

Donald “Don” Oscar Anderson, 93, passed away Oct. 13. Don was a former Beltrami Electric Cooperative general manager and worked there from 1964 until his retirement in October 1989.

Charles Andress, 93, passed away Sept. 23. He was a former Itasca-Mantrap Co-op Electric director and served on their board from 1981-2004.

George Harvey, 72, passed away July 11. He had served on the Lake Country Power board of directors for the past 17 years.

Don Johnson, 97, passed away Dec. 13. He served on Redwood Electric’s board of directors for 45 years and was chair of the board for many of those years.

Marvin Johnson, 101, a former general manager of Federated Rural Electric Association (FREA), passed away June 17. Marv began employment at FREA in 1942, holding several positions and eventually serving as their second general manager from 1963-1984.

Harlan Lanz, age 72, passed away at home on his family farm Feb. 2, surrounded by family. Harlan proudly served on the BENCO board of directors for 13 years.

Janet Lekson, age 68, passed away Feb. 29. Janet served as a director for both Dakota Electric Association and MREA. She was also a REPAC trustee and an MREA Resolutions Committee member.

Clarence Lindseth, 89, passed away Nov. 7. He served as a director on the Beltrami Electric board from 1990 to 2002 and on the Minnkota Power board from 1998 to 2001.

Robert Nelson, 91, passed away Nov. 21. He served on the Wild Rice Electric board from 1975-2002. He also served for a time on the Square Butte board of directors.

Don O’Brien, 93, passed away Dec. 6. He was a former Crow Wing Power director (1992-2016), and was also on the Great River Energy board of directors for 17 years.

Lowell Peterson, 82, passed away June 19. Lowell was a former Goodhue County Cooperative Electric Association director from 1971 to 1999. He also served on the Cooperative Power board.

Emmet Weidenborner, 81, passed away Nov. 10. He served on the Beltrami Electric board of directors from 1998 to 2010.



Minnesota Rural Electric Association

2020